

ISO A1 594mm x 841mm
 Approved: Iseult Tomas Sexton
 Checked: Iseult Hall
 Project Management Initials: Designer: Iseult Hall
 Last Plotted: 13/03/2019 14:29:07
 Filename: C:\BIM\Projects\2175-OPRA-COA-Z01-ZZ-M3-A-BUILDING_ibee@coady.ie.rvt
 Printed on: 100% Post Consumer Recycled Content Paper



PROJECT
Opera Site

CLIENT
Limerick City and County Council

CONSULTANT

AECOM
The Clarence Street West Building
2 Clarence Street West
Belfast BT2 7GP
United Kingdom
Fax: +44 (0)28 9079 5651
Tel: +44 (0)28 90697200
www.aecom.com

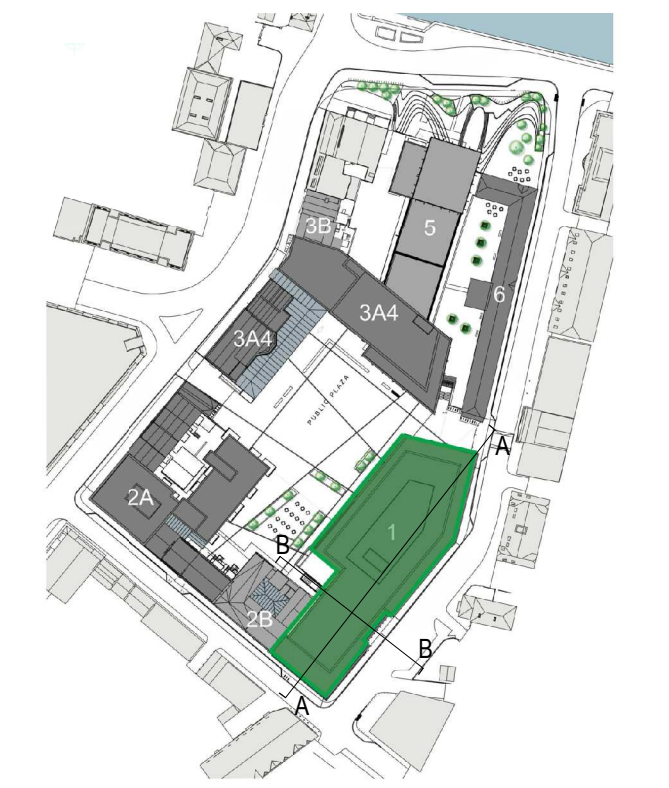


- LEGEND:**
- 1 Selected brick finish
 - 2 Aluminium framed glazing with PPC finish to mullions & reveals
 - 3 Aluminium framed glazing with vertical metal fins
 - 4 Shopfront glazing
 - 5 Aluminium framed glazing with fritted treatment at floor levels
 - 6 Metal doorset to electrical plant room
 - 7 Metal clad canopy
 - 8 Louvered PPC aluminium screen enclosure to rooftop plant
 - 9 Glazed canopy on steel structure

Note: All levels referenced to Malin Head Datum

For Site Levels refer to Landscape Architects drawings

KEY PLAN



ISSUE/REVISION HISTORY

I/R	DATE	DESCRIPTION
-	Jan 19	Planning Submission

PROJECT NUMBER

2175

SHEET TITLE

Parcel 01 - Proposed Sections AA & BB

SCALE 1:200@A1

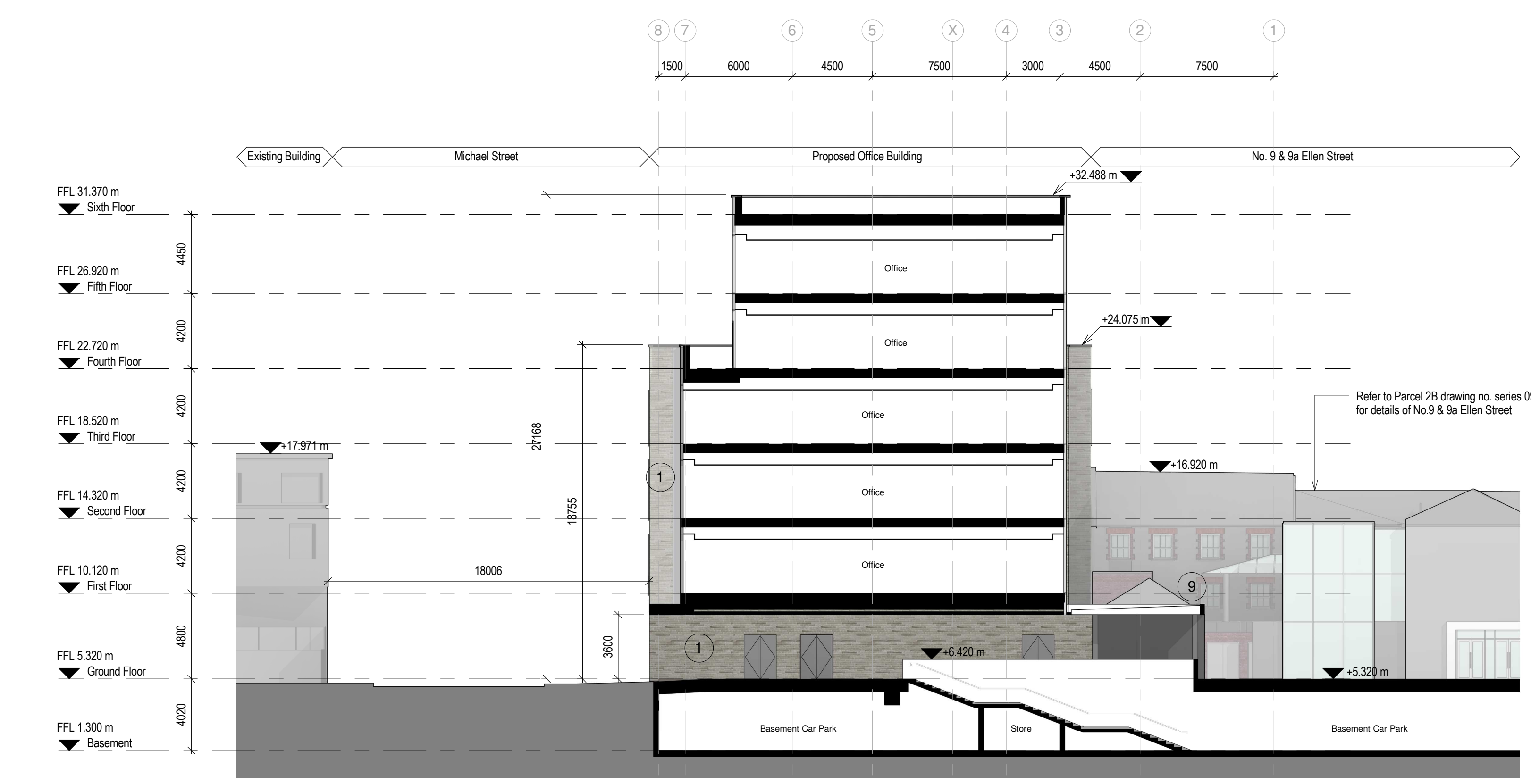
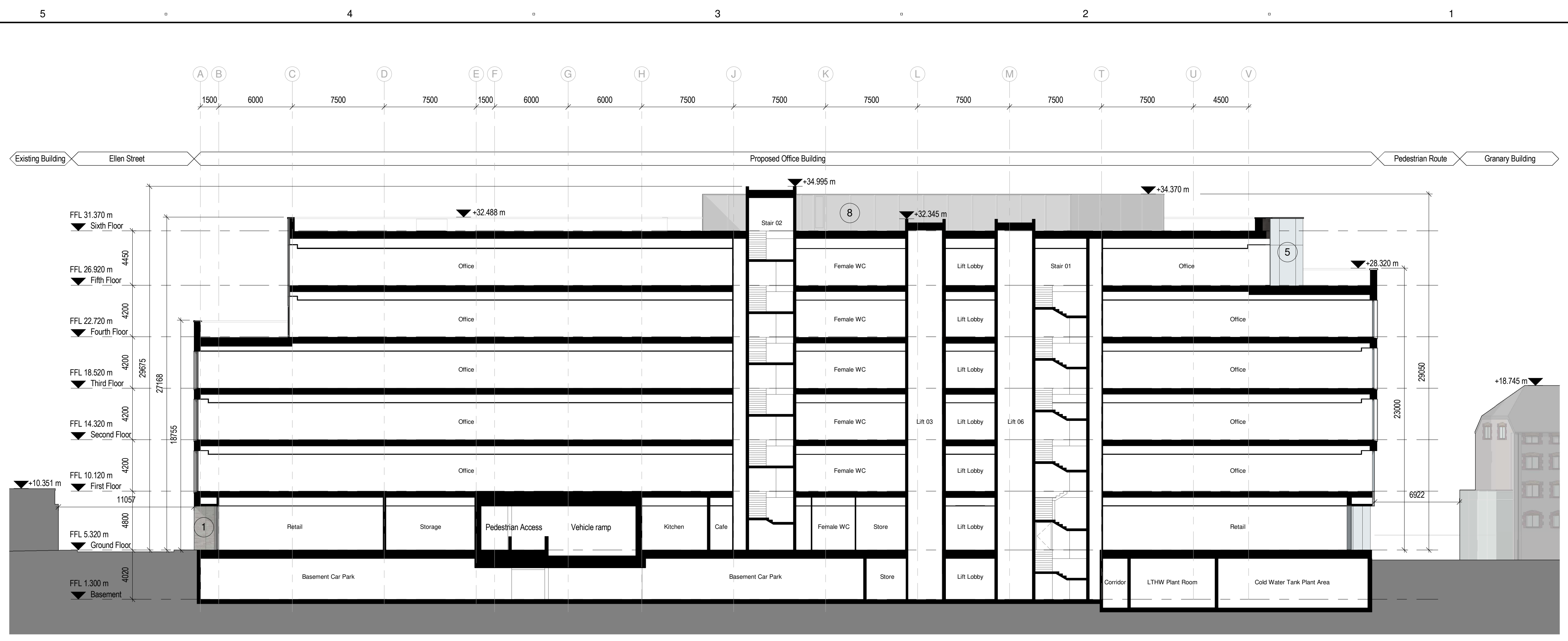
SHEET NUMBER

OPRA-COA-Z01-ZZ-DR-AR-12001

REV

-

This drawing has been prepared for the use of AECOM's client. It may not be used, modified, reproduced or relied upon by third parties, except as agreed by AECOM or as required by law. AECOM accepts no responsibility, and denies any liability, whatsoever, to any party that uses or relies on this drawing without AECOM's express written consent. Do not scale this document. All measurements must be obtained from the stated dimensions.



Parcel 01 - Proposed Section B-B
1:200